

DENVER

VIBRATOR

Dry Cast Electric Vibrator



- ◆ Ideal for Dry Cast Operations Where Lower Frequencies and Higher Forces are Needed for Proper Consolidation.
- ◆ Also Great for Bins, Hoppers, Screens, Compaction Tables and More.
- ◆ Designed for the Stresses Commonly Encountered with Form Applications.
- ◆ Lower Operating Cost than Vibrators Powered by Air or Hydraulic.
- ◆ Can be Operated at Higher Speeds Using a Frequency Driver.
- ◆ Sealed for Protection Against Moisture and Dust.
- ◆ Much Quieter than Air Powered Vibrators.
- ◆ Eccentric Weights are Adjustable from 0 to 100 Percent of Maximum Force.
- ◆ Direct Interchange for Bosch, Cougar, Iskco, Martin Engineering, Hawkeye and More.



Denver Concrete Vibrator P.O. Box 27790 Denver, CO 80227-0790 USA
Toll Free: 800.392.6703 Tel: 303.778.8832 Fax: 303.778.8682
Web Site: www.denverconcretevibrator.com Email: info@denverconcretevibrator.com

DVAC-3550-2 230/460V 60HZ 3PH

MECHANICAL CHARACTERISTICS

Weight: (30.5 kg)
Rpm: 3450
Protection: IP65

Weight: (67.1 lb)

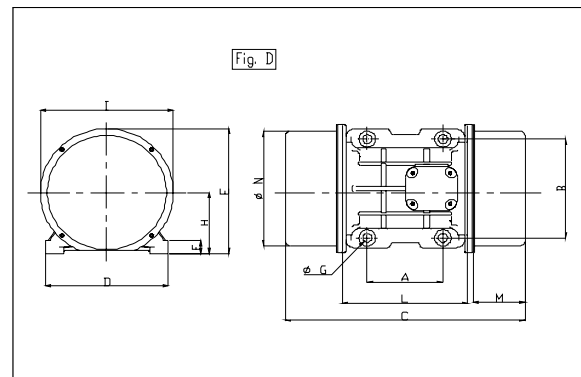
Working moment: (22.34 kg-cm) (19.37 in.-lb)
Max. Static moment: (11.17 kg-cm) (9.68 in.-lb)

Weight Position	Unbalance		Centrifugal Force			Bearing Life (hrs) w/1.3 Load Factor
	in.-lb	kg-cm	lb	kg	kN	
100%	9.69	11.17	3277	1490	14.60	2,069
90%	8.73	10.05	2949	1341	13.14	2,940
80%	7.76	8.94	2622	1192	11.68	4,353
70%	6.79	7.82	2294	1043	10.22	6,794
60%	5.82	6.70	1966	894	8.76	11,358
50%	4.85	5.59	1639	745	7.30	20,856
40%	3.88	4.47	1311	596	5.84	43,879
30%	2.91	3.35	983	447	4.38	114,478
20%	1.94	2.23	655	298	2.92	442,275
10%	0.97	1.12	328	149	1.46	4,457,849

Bearing: NJ 306 C3 (skf Explorer)
Dynamic Load: 26239 lb (11927 kg)
Lubrication: SKF LGHP2
Lube schedule: Every 1000 working hours. Add. 7 grams per bearing
Lube replacement: Every 3000 working hours for vertical fixing Add 14 grams per bearing
Every 5000 working hours for orizontal fixing
Frame material: Cast iron
Flange material: Cast iron
Cover material: Aluminium

ELECTRICAL CHARACTERISTICS

Nominal input voltage: 230 / 460
Nominal current (amps): 4.5/ 2.25
Start current (amps): 18,72 / 10.8
Start/nom current ratio: 4.8
Input power (W): 1611
Output power : (1.77 Hp) 1321 W
Efficiency: 82%
Power factor (cos phi): 0.9
Insulation class: F
Max. Ambient Temp.: (40 °C) 104 F



OVERALL DIMENSIONS							
A		B		ØG (HOLES)		D	
mm	inch	mm	inch	mm	inch	N°	mm
100	3.94	200	7.87	17	0.67	4	235
E		F		C		H	
mm	inch	mm	inch	mm	inch	mm	inch
204	8.03	24	0.94	321	12.64	96	3.78
I		L		M		N	
mm	inch	mm	inch	mm	inch	mm	inch
180	7.09	205	8.07	47	1.85	170	6.69

